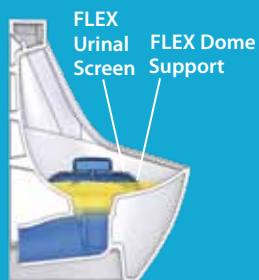


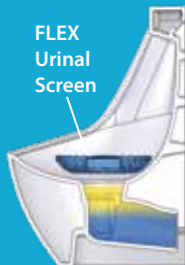
## EnviroSeal FLEX System with Pedestal Urinals

- An inexpensive strategy to save water when the replacement of a 'water' urinal with a 'no water' urinal is not an option.
- Saves 1,000's of gallons of water annually in each urinal.
- System optimizes hygiene, odor control, and reduces bacteria buildup.
- FLEX Handle Lock helps prevent excessive flushing throughout the day.
- FLEX Urinal Screen provides pleasant fragrance and drain protection for up to 60 days in any urinal.
- Pürleve BioPür Premium provides fragrance and enzymes to help reduce Uric Salt buildup and other odor creating bacteria for up to 60 days.



Scenario 1:  
EnviroSeal FLEX System  
SW (Standing Water)

FLEX Urinal Screen is used with 'FLEX Screen Dome Support' to ensure the water & urine resting above the drain is hidden from the patrons.



Scenario 2:  
EnviroSeal FLEX System  
NW (No Water)

FLEX urinal screen lays flat in urinal as the Water and Urine does not rest above the Drain.



## EnviroSeal FLEX System with Floor Mounted (FM) Urinals

1. 'Do Not Flush' Sticker

2. FLEX Handle Lock

3. Floor Mount Urinal

4. BioPür Premium

5. FLEX Urinal Screen



## EnviroSeal FLEX System FM (Floor Mount Urinal) NW (No Water)



- FLEX urinal screen lays flat as the Water and Urine does not rest above the Drain.
- FLEX FM Drain Insert Used for easy installation of the FLEX Urinal Screen and BioPür Premium.

## EnviroSeal FLEX System FM (Floor Mount Urinal) SW (Standing Water)



- FLEX Screen Dome Support provided allows the FLEX Urinal Screen to cover the unsightly water and urine.

# EnviroSeal FLEX System



Global Innovation for  
Water Conservation

Phone: (407) 935-1180  
Toll Free: (877) 787-5383  
Fax: (407) 935-0001

Pürleve™ Headquarters  
111 W. Olive St.  
Glendale, WI 53212 USA

Pürleve™ | ZeroFlush™  
www.purleve.com  
www.zeroflush.com

Phone: (407) 935-1180  
Toll Free: (877) 787-5383  
Fax: (407) 935-0001

Pürleve™ Headquarters  
111 W. Olive St.  
Glendale, WI 53212 USA

Pürleve™ | ZeroFlush™  
www.purleve.com  
www.zeroflush.com

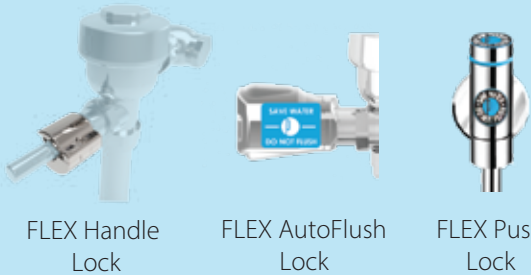
"A cleaner world is within reach."



## Global Innovation for Water Conservation

### EnviroSeal FLEX Systems

(Instructional Videos: Go to [www.purleve.com](http://www.purleve.com) and Double Click on YOUTUBE Icon)



FLEX Handle Lock      FLEX AutoFlush Lock      FLEX Push Lock

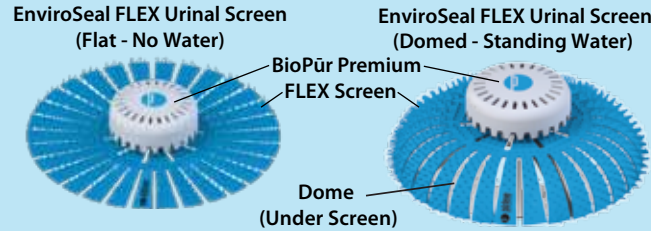


- 'Do Not Flush' Sticker
- FLEX Handle Lock
- 'Do Not Flush' Decal
- BioPur Premium
- FLEX Screen

- Minimize water consumption
- Keep current installed urinal
- Maintain washroom cleanliness and hygiene
- Installs in all types of urinals (flat or complex curves)
- Reduces bacteria build up while providing added fragrance

### EnviroSeal FLEX Urinal Screen

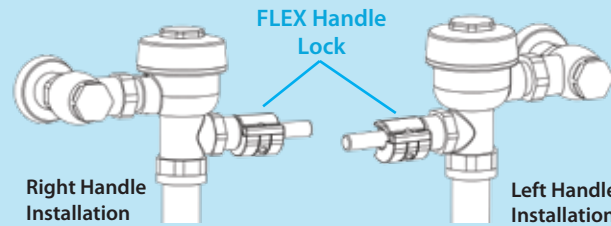
- Used in any type of water or 'no-water' urinal.
- Provides up to 60 days of pleasant fragrance and drain protection.
- Proprietary design conforms to any urinal size and shape.
- BioPur Premium can be attached to provide additional fragrance and used to control bacteria growth that causes build up of uric salts and odor.



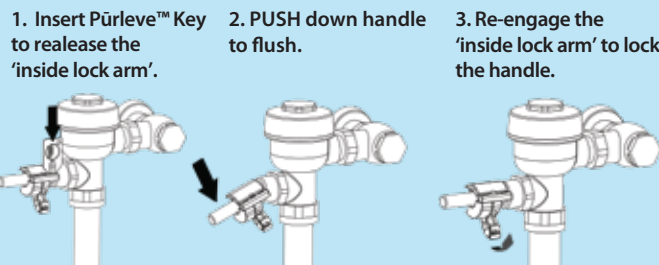
- Flat FLEX Urinal Screen used when water and urine are below drain.
- Domed FLEX Urinal Screen used when water and urine are above drain.

### EnviroSeal FLEX Handle Lock

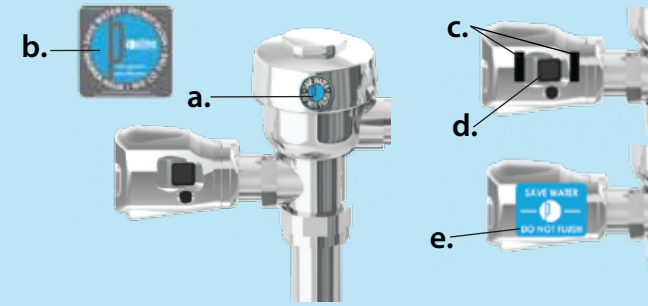
- Robust and Inexpensive system for Right or Left Handle urinal installations.
- Prevents extensive flushing throughout the day leading to 1,000's of saved gallons of water per year.
- Stainless Plated Design matches nicely on metal flush valves.
- Easy installation onto Flush Valve handles with no special tools needed.
- Easy process to flush for facility workers.



#### FLEX Handle Lock Flushing Steps



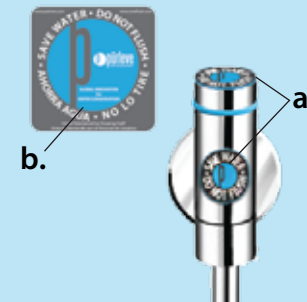
### EnviroSeal FLEX AutoFlush Lock



The Purleve FLEX AutoFlush Lock provides an easy to use and inexpensive method to avoid significant water usage for automatic flushing systems.

1. Place 'Save Water' circle decal (a) on the valve where it's most visible.
2. Place the 'Do No Flush' Sticker (b) on the Wall near the Valve.
3. Place 2 Velcro strips (c) on the outside of the AutoFlush lens / infrared sensors (d).
4. Place the 'Save Water' velcro decal (e) on the receiving velcro (c).
5. To FLUSH, simply remove the velcro decal (e).
6. Place velcro decal (e) back onto IR lens to avoid flushing.

### EnviroSeal FLEX PUSH Lock



The Purleve FLEX Push Lock provides an inexpensive communication system to avoid significant and unnecessary flushing. The sign and decals will help reduce the amount of flushing in the commercial washroom.

1. Place 'Save Water' circle decals (a) on the valve where it's most visible.
2. Place the 'Do Not Flush' sticker (b) on the wall near the Flush valve.