



Urinal Accessory Items - Price Sheet

A cleaner world is within reach.

FLEX Urinal System - The First 6-Month Starter Kit							
Product # Handle Lock	Product # Push Lock	Product # Autoflush Lock	Product Name	Product Description: (One FLEX Lock option included with each System: Handle, Push or AutoFlush Lock)	Case Pack	Case Dimensions	Resale Price Per Box \$
2800-W	2800-WP	2800-WA	EnviroSeal FLEX System	6-Month kit used when 'NO WATER' resting above drain that provides a pleasant fragrance and reducing odor creating bacteria. Includes: 1 FLEX Lock, 3 FLEX Urinal Screens, 'Do Not Flush' Decal & Sticker, 3 White Purleve BioPur Premiums, and 3 Threaded Connectors. *NOTE: Order EnviroSeal FLEX Screen Dome Support if water resting ABOVE the drain. (Product #2806 or #2807)	1 Set per box/ 1 Box per case	10 X 10 X 4", 2 lbs. 25 X 25 X 10 cm, 0.9 kg	W: \$99.95 WP: \$69.95 WA: \$69.95
2800-C	2800-CP	2800-CA	EnviroSeal Chrome FLEX System	6-Month kit used when 'NO WATER' resting above drain that provides a pleasant fragrance and reducing odor creating bacteria. Includes: 1 FLEX Lock, 3 Flex Urinal Screens, 'Do Not Flush' Decal & Sticker, 3 Chrome Purleve BioPur Premiums, and 3 Threaded Connectors. *NOTE: Order EnviroSeal FLEX Screen Dome Support if water resting ABOVE the drain. (Product #2806 or #2807)	1 Set per box/ 1 Box per case	10 X 10 X 4", 2 lbs. 25 X 25 X 10 cm, 0.9 kg	C: \$112.95 CP: \$83.95 CA: \$83.95
2801-W	2801-WP	2801-WA	EnviroSeal FLEX System (FM)	6-Month kit for Floor Mount (FM) urinals when 'NO WATER' resting above drain that provides a pleasant fragrance and reducing odor creating bacteria. Includes: 1 FLEX Lock, 'Do Not Flush' Decal & Sticker, 3 Flex Urinal Screens, FLEX Drain Insert, and 3 White Purleve BioPur Premiums. *NOTE: Order EnviroSeal FLEX Screen Dome Support if water resting ABOVE the drain. (Product #2806 or #2807)	1 Set per box/ 1 Box per case	10 X 10 X 4", 2 lbs. 25 X 25 X 10 cm, 0.9 kg	W: \$115.95 WP: \$89.95 WA: \$89.95
2801-C	2801-CP	2801-CA	EnviroSeal Chrome FLEX System (FM)	6-Month kit for Floor Mount (FM) urinals when 'NO WATER' resting above drain that provides a pleasant fragrance and reducing odor creating bacteria. Includes: 1 FLEX Lock, 'Do Not Flush' Decal & Sticker, 3 Flex Urinal Screens, FLEX Drain Insert, and 3 Chrome Purleve BioPur Premiums. *NOTE: Order EnviroSeal FLEX Screen Dome Support if water resting ABOVE the drain. (Product #2806 or #2807)	1 Set per box/ 1 Box per case	10 X 10 X 4", 2 lbs. 25 X 25 X 10 cm, 0.9 kg	C: \$126.95 CP: \$92.95 CA: \$92.95

FLEX Urinal Accessory Items (EnviroSeal FLEX Kits & Screens)					
Product #	Product Name	Product Description	Case Pack	Case Dimensions	Resale Price Per Box \$
2802	EnviroSeal FLEX Urinal Screen Case	12 EnviroSeal FLEX Urinal Screens, each with up to 60 days of pleasant fragrance and ultimate drain protection.	12 Units per box/ 1 Box per case	10 X 10 X 4", 2 lbs. 25 X 25 X 10 cm, 0.9 kg	\$59.95
2803	EnviroSeal FLEX Handle Lock	Proprietary Lock System for standard left or right mounted flush handle valves Includes: FLEX Handle Lock (Stainless Plated), Purleve Key, Gaskets, 'DO NOT FLUSH' decal, 'Do Not Flush' Sticker, and Allen wrench. No additional supplies required for installation.	1 Unit per box/ 1 Box per case	6 x 6 x 6 in, 1 lb 15.24 x 15.24 x 15.24 cm, .45 kgs	\$49.95
2804	EnviroSeal FLEX Push Lock	'Do Not Flush' signage for PUSH button flush valves. Includes 2 'DO NOT FLUSH' decals and 'Do Not Flush' Sticker. No additional supplies required.	1 Unit per Package/1 Package per case	8.5" X 11" (21.5 X 28 cm) or Smaller Envelope (Less than 1 lb / 0.45 kg)	\$5.95
2805	EnviroSeal FLEX Autoflush Lock	Proprietary Lock System for AutoFlush valves. Includes 1 FLEX AutoFlush Velcro Lock, 'Do Not Flush' Sticker and 'Do Not Flush' Decal.	1 Unit per Package/1 Package per case	8.5" X 11" (21.5 X 28 cm) or Smaller Envelope (Less than 1 lb / 0.45 kg)	\$8.95
2806	EnviroSeal FLEX Screen DOME Support	The EnviroSeal FLEX Screen DOME support is used with the Purleve Urinal Screen when water and urine rests above the urinal drain. Includes 3 Dome Supports and 3 threaded connectors to easily affix to the Purleve FLEX Urinal Screen. Use one support for up to 60 days.	3 Units per box/ 1 Box per case	6 x 6 x 6 in, 1 lb 15.24 x 15.24 x 15.24 cm, .45 kgs	\$15.95
2807	EnviroSeal FLEX Screen DOME Support Case Pack	The EnviroSeal FLEX Screen DOME support is used with the Purleve Urinal Screen when water and urine rests above the urinal drain. Includes 12 Dome Supports and 12 threaded connectors to easily affix to the Purleve FLEX Urinal Screen. Use one support for up to 60 days.	12 Units per box/ 1 Box per case	6 x 6 x 6 in, 2 lbs 15.24 x 15.24 x 15.24 cm, .90 kgs	\$54.95
2808	EnviroSeal FLEX Drain Insert	The EnviroSeal FLEX Drain Insert is typically used with the Floor Mount (FM) urinal when water and urine rests below the drain. Includes the Drain Insert Cover for complete installation. FLEX Drain Insert can be used for up to 6 months.	1 Unit per Package/1 Package per case	8.5" X 11" (21.5 X 28 cm) or Smaller Envelope (Less than 1 lb / 0.45 kg)	\$6.95
2809-W	EnviroSeal FLEX Kit	6-Month kit used when 'NO WATER' resting above drain that provides a pleasant fragrance and reducing odor creating bacteria. 3 FLEX Urinal Screens, 3 Purleve White BioPur Premiums, and 3 Threaded Connectors. *NOTE: Order EnviroSeal FLEX Screen Dome Support if water resting ABOVE the drain (Product #2806 or #2807)	1 Kit per box/ 1 Box per case	10 X 10 X 4", 2 lbs. 25 X 25 X 10 cm, 0.9 kg	\$60.00
2809-C	EnviroSeal Chrome FLEX Kit	6-Month kit used when 'NO WATER' resting above drain that provides a pleasant fragrance and reducing odor creating bacteria. 3 FLEX Urinal Screens, 3 Purleve Chrome BioPur Premiums, and 3 Threaded Connectors.*NOTE: Order EnviroSeal FLEX Screen Dome Support if water resting ABOVE the drain (Product #2806 or #2807)	1 Kit per box/ 1 Box per case	10 X 10 X 4", 2 lbs. 25 X 25 X 10 cm, 0.9 kg	\$72.00
2810-W	EnviroSeal FLEX Kit (FM)	6-Month kit for Floor Mount (FM) urinals when 'NO WATER' resting above drain that provides a pleasant fragrance and reducing odor creating bacteria. Includes: 3 FLEX Urinal Screens, 1 FLEX Drain Insert, and 3 Purleve White BioPur Premiums. *NOTE: Order EnviroSeal FLEX Screen Dome Support if water resting ABOVE the drain (Product #2806 or #2807)	1 Kit per box/ 1 Box per case	10 X 10 X 4", 2 lbs. 25 X 25 X 10 cm, 0.9 kg	\$64.95
2810-C	EnviroSeal Chrome FLEX Kit (FM)	6-Month kit for Floor Mount (FM) urinals when 'NO WATER' resting above drain that provides a pleasant fragrance and reducing odor creating bacteria. Includes: 3 FLEX Urinal Screens, 1 FLEX Drain Insert, and 3 Purleve Chrome BioPur Premiums. *NOTE: Order EnviroSeal FLEX Screen Dome Support if water resting ABOVE the drain (Product #2806 or #2807)	1 Kit per box/ 1 Box per case	10 X 10 X 4", 2 lbs. 25 X 25 X 10 cm, 0.9 kg	\$74.95

HEADQUARTERS
111 W. Olive St.
Glendale, WI 53212 USA

TELEPHONE
Phone: (407) 935-1180
Toll Free: (877) 787-5383
Fax: (407) 935-0001

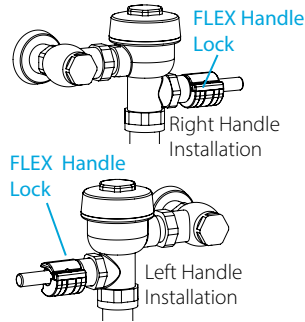
INTERNET
www.purleve.com

EnviroSeal FLEX System Overview

(Instructional Videos: Go to www.purleve.com / Double Click on YOUTUBE Icon)

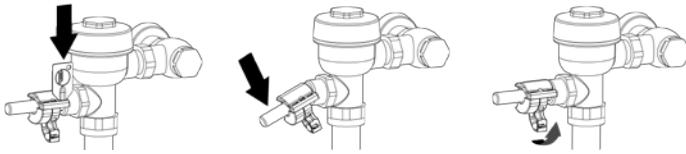
EnviroSeal FLEX Handle Lock

- Robust and Inexpensive System for Right or Left Handle Installations.
- Prevents extensive flushing throughout the day leading to 1,000's of saved gallons of water per year.
- Stainless Plated Design matches nicely on metal flush valves.
- Easy installation on Flush Valve handles with no special tools needed.
- Easy to flush for facility workers.

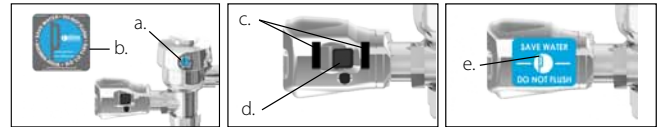


Flushing with the FLEX Handle Lock

1. Insert Waxie Key to release the 'inside lock arm'.
2. PUSH down handle for flush.
3. Re-engage the 'inside lock arm' to lock the handle.



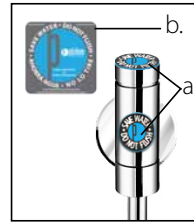
EnviroSeal FLEX AutoFlush Lock



The Pürleve FLEX AutoFlush Lock provides an easy to use and inexpensive method to avoid significant water usage for automatic flushing systems.

1. Place 'Save Water' circle decal (a) on the valve where it's most visible.
2. Place the 'Do Not Flush' Sticker (b) on the Wall near the Flush Valve.
3. Place 2 Velcro strips (c) on the outside of the AutoFlush lens / infrared sensors (d).
4. Place the 'Save Water' velcro decal (e) on the receiving velcro (c).
5. To FLUSH, simply remove the velcro decal (e).
6. Place velcro decal (e) back onto IR lens to avoid flushing.

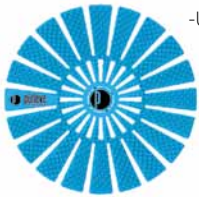
EnviroSeal FLEX PUSH Lock



The Pürleve FLEX Push Lock provides an inexpensive communication system to avoid significant and unnecessary flushing. The sign and decals will help reduce the amount of flushing in the commercial washroom.

1. Place 'Save Water' circle decals (a) on the valve where it's most visible.
2. Place the 'Do Not Flush' sticker (b) on the wall near the Flush valve.

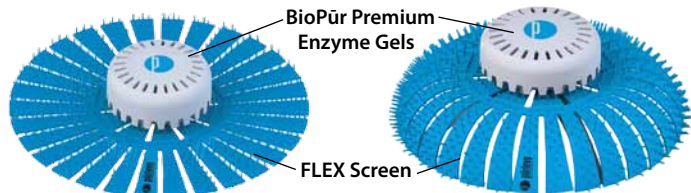
EnviroSeal FLEX Urinal Screen



- Used in any type of 'water' or 'no-water' urinal.
- Provides up to 60 days of pleasant fragrance and drain protection.
- Pürleve BioPür Premium provides fragrance and enzymes to help reduce Uric Salt buildup and other odor creating bacteria for up to 60 days.

EnviroSeal FLEX Urinal Screen (Flat - No Water)

EnviroSeal FLEX Urinal Screen (Domed - Standing Water)



-Flat FLEX Urinal screen used when water and urine are below the drain

-FLEX urinal screen & FLEX Domed Support used when water and urine are resting above drain.

EnviroSeal FLEX System Installed in Floor Mounted (FM) Urinals



EnviroSeal FLEX System FM (Floor Mount Urinal) NW (No Water)



- FLEX urinal screen lays flat as the Water and Urine does not rest above the Drain.
- FLEX FM Drain Insert Used for easy installation of the FLEX Urinal Screen and Pürleve BioPür Premium

EnviroSeal FLEX System FM (Floor Mount Urinal) SW (Standing Water)



-FLEX Screen Dome Support allows the FLEX Urinal Screen to cover the unsightly water and urine.

EnviroSeal FLEX System Installed in Pedestal Urinals

- An inexpensive strategy to save water when the replacement of a 'water' urinal with a 'no water' urinal is not an option.
- Saves 1,000's of gallons of water for installed 'water' urinals each year.
- System optimizes hygiene, odor control, and reduces bacteria buildup.
- FLEX Locks helps prevent excessive flushing throughout the day.
- FLEX Urinal Screen provides pleasant fragrance and drain protection for up to 60 days in any urinal.
- Pürleve BioPür Premium provides fragrance and enzymes to help reduce Uric Salt buildup and other odor creating bacteria for up to 60 days.

Scenario 1: EnviroSeal FLEX System NW (No Water)

FLEX urinal screen lays flat in urinal as the Water and Urine does not rest above the Drain.

Scenario 2: EnviroSeal FLEX System SW (Standing Water)

FLEX Urinal Screen is used with 'FLEX Screen Dome Support' to ensure the water & urine resting above the drain is hidden from the patrons.



HEADQUARTERS

111 W. Olive St.
Glendale, WI 53212 USA

TELEPHONE

Phone: (407) 935-1180
Toll Free: (877) 787-5383
Fax: (407) 935-0001

INTERNET

www.purleve.com