

# ENVIRONMENTALLY FRIENDLY

## Odor Barrier Trap Model Number



Model ZF-101



Model ZF-201



Model ZF-301



Model ZF-501

### ZeroFlush® Model ZF-101 ADA Compliant

Vitreous China No-Water Wall Hung Urinal with integral housing and drain insert.

**Dimensions:** 19" W x 28" H x 15.5" D

**Rough-In:** For 24" lip height, drain center line must be 17" from floor

**Approximate Weight:** 60 lbs. **Color:** White

### ZeroFlush® Model ZF-201 ADA Compliant

Vitreous China No-Water Wall Hung Urinal with integral housing and drain insert.

**Dimensions:** 15.9" W x 24.8" H x 15.5" D

**Rough-In:** For 24" lip height, drain center line must be 17" from floor

**Approximate Weight:** 40 lbs. **Color:** White

### ZeroFlush® Model ZF-301 ADA Compliant

Vitreous Stainless Steel No-Water Wall Hung Urinal with integral housing and drain insert.

**Dimensions:** 18.75" W x 31" H x 15" D

**Rough-In:** For 24" lip height, drain center line must be 17" from floor

**Approximate Weight:** 40 lbs. **Color:** 304 Stainless Steel

### ZeroFlush® Model ZF-501 ADA Compliant

Vitreous China No-Water Wall Hung Urinal with integral housing and drain insert.

**Dimensions:** 13.25" W x 19.5" H x 13" D

**Rough-In:** For 24" lip height, drain center line must be 17" from floor

**Approximate Weight:** 30 lbs. **Color:** White

## Remarkable Savings

### Water is Precious.

- The average swimming pool has 15,000 gallons of water.
- Amazingly, one ZeroFlush® urinal can save 3 swimming pools worth of water in a single year.
- ZeroFlush® urinals help reduce the growing amount of sewage to save our heavily taxed municipal waste water infrastructure.

## Liquid Odor Barrier Trap Urinals

### Included:

- Mounting Hardware
- Wall Bracket
- Drain Flange Coupler
- Odor Barrier Liquid
- ZeroFlush® Insert Key
- Drain Insert
- Installation and Maintenance Instructions

Meets ANSI/ASME A122.19.2.M-1998 and A117.1 (section 605.2) for vitreous china fixtures. IAPMOIGC 161-2000 and ANZIZ125.9-94



# ZERO FLUSH

## ZERO WATER URINALS

Liquid Odor Barrier System



Toll Free: (877) 787-5383  
Phone: (407) 935-1180  
Fax: (407) 935-0001

ZeroFlush®  
111 W Olive St  
Glendale, WI 53212 USA

Purleve™ | ZeroFlush™  
[www.purleve.com](http://www.purleve.com)  
[www.zeroflush.com](http://www.zeroflush.com)

Toll Free: (877) 787-5383  
Phone: (407) 935-1180  
Fax: (407) 935-0001

ZeroFlush®  
111 W Olive St  
Glendale, WI 53212 USA

Purleve™ | ZeroFlush™  
[www.purleve.com](http://www.purleve.com)  
[www.zeroflush.com](http://www.zeroflush.com)



## SIZE MATTERS

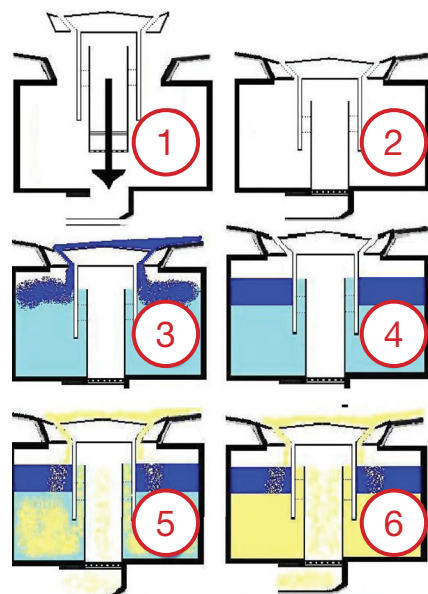
OUR SLEEK MODERN DESIGN HELPS REDUCE SPLASH AND KEEPS FLOORS DRIER.



**LARGE TRAP**  
means more uses!  
... averages 15,000 uses  
before maintenance.

- Easy to place and remove insert
- Disposable and recyclable insert
- Largest built-in waste trap of any no water urinal
- Averages 15,000 uses before any maintenance
- No Cartridges
- Free of odor
- No need to add Odor Barrier Oil between insert changes
- Easiest to maintain and clean
- Lowest operational and maintenance cost
- No water or sewer cost
- Quickest return on investment
- All natural ZeroFlush® Odor Barrier
- Improved design reduces splash
- Easy installation and retrofitting
- Water efficiency LEED™ point accumulation
- Vitreous china and stainless steel
- No Leaky Valves
- No Hard Water Stains
- Eliminate Wasteful Flushing
- Eliminate Overflows
- Eliminate Flooding
- No Harsh Chemicals

### How it works?



1. Install Drain Insert
2. Trap complete
3. First, add 32oz. of water. Second, add 12oz. of Odor Barrier Oil
4. Trap ready for use
5. First use
6. Ongoing use

After approximately 15,000 uses, drops of blue Odor Barrier will appear on the insert cover. This indicates it is time to replace the insert and the Odor Barrier liquid.

### ODOR BARRIER REPLACEMENT KIT

- ZeroFlush® Odor Barrier
- Insert Removal Tool
- Drain Insert



## MAINTENANCE AND CLEANING

### Odor Free

ZeroFlush®, zero water urinals are the culmination of proven technology, environmental concern and innovation. Our patented system will give you years of superior odor free performance and trouble free operation, improving total rest room sanitation and hygiene. ZeroFlush® has been developed to be the most economical and environmentally friendly zero water consuming urinals in the global market.

### Daily Cleaning

As with any other urinal (water and no water), ZeroFlush® urinals should be cleaned on a regular basis.

The ZeroFlush® urinals are designed with the maintenance person in mind. Cleaning is very quick and easy.

NO scrubbing with detergents is required or the use of odor masking devices or chemicals.

**Pürleve™ cleaner can be used on any surface. Spray and Walk Away!**



Pürleve™ cleaner is a revolutionary cleaner and deodorizer that harnesses the power of bacteria and enzymes to yield unsurpassed cleaning power. Unlike chemical options which offer a temporary solution, this formula naturally and safely degrades grease and organic buildup on a wide variety of hard surfaces. The biological components are highly efficient at penetrating porous surfaces to remove embedded grease and grime in crevices and grout lines.

## Maintenance is a cinch!

At no time will the person replacing the odor barrier fluid come in contact with urine.



1. Remove the drain insert with the provided tool.



2. Remaining odor barrier and urine in trap will automatically flush away down the waste pipe.



3. Rinse the waste line with a bucket of water.



4. Install new drain insert into the housing.



5. Pour in 32oz. of water through the drain insert.



6. Pour 12oz. of proprietary ZeroFlush® Odor Barrier Fluid into the drain insert.