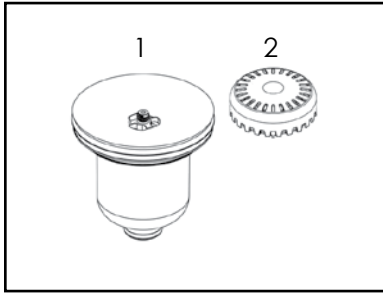
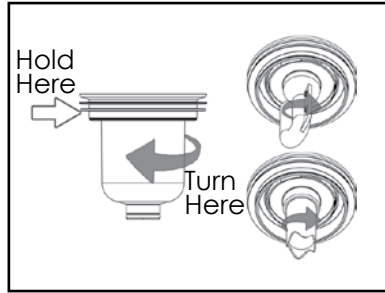


To Install the First EnviroSeal™ System (Elastomer or J-Trap) and BioPür™ Kit or Privacy Dome

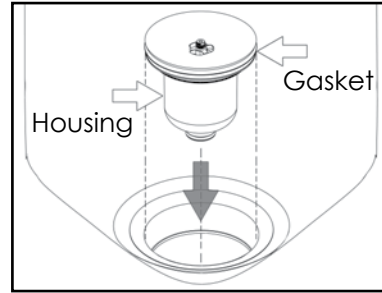


1. Remove EnviroSeal™ and BioPür™ Kit from packaging. Lightly shake the EnviroSeal™ system to ensure trap is secure. If a rattle is heard, **go to step 2**. If no rattle is heard, **go to step 3**.

WARNING! Be careful when removing as the EnviroSeal corners are SHARP! Hold the side of the EnviroSeal when unscrewing (see arrow in #2)

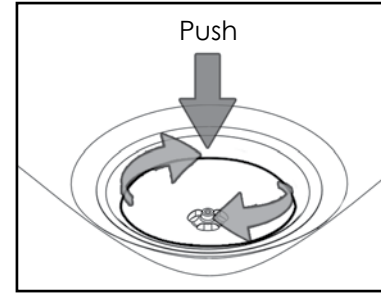


2. Unscrew the EnviroSeal™ housing. Ensure the trap is secured, turn clockwise. Once secured, place the EnviroSeal™ housing back on system by turning clockwise (bayonet system).



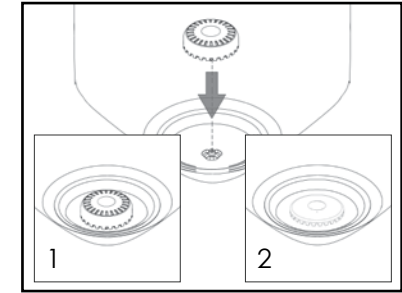
3. First, ensure the gasket is in place all around the EnviroSeal™. If not in place, the seal will not be optimized. Place EnviroSeal™ above Proprietary Urinal Trap.

Note: If used in a non-ZeroFlush urinal, use at your own risk and performance not guaranteed. Ensure the housing is removed before installation.



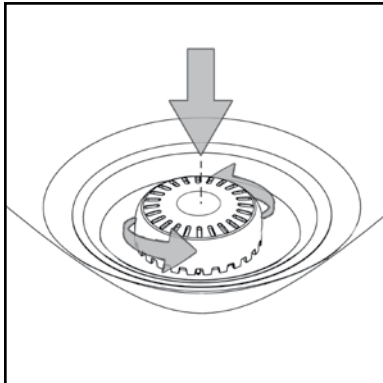
4. Firmly push down around ENTIRE CIRCUMFERENCE of EnviroSeal™ outer edge to ensure it is in place with NO gaps between EnviroSeal™ and metal ring.

Note: For non-ZeroFlush urinals, ensure the EnviroSeal is placed EVENLY (No Tilt) in trap or odors could occur.

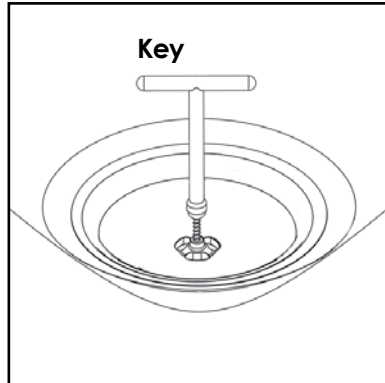


5. After removing the BioPür™ Kit from packaging, screw a new BioPür™ Kit (#1) or Privacy Dome (#2) onto the EnviroSeal™ until firmly in place. However, **DO NOT OVERTIGHTEN**.

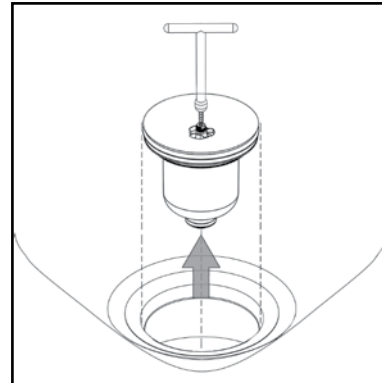
To Replace the EnviroSeal™ (Estimated 6 Month Solution)



1. Push down and turn counterclockwise to remove the BioPür™ Kit or Privacy Dome from the EnviroSeal™. Please recycle.



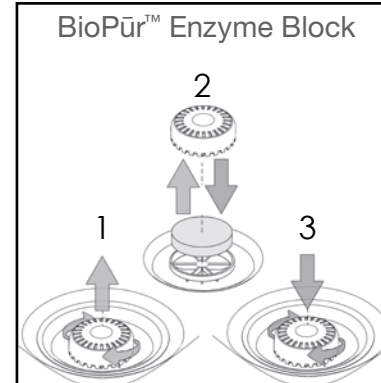
2. PUSH then screw the Threaded Key into the center hole.



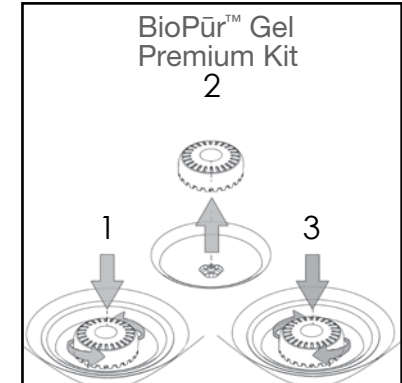
3. Once a strong engagement is achieved, pull up at a slight angle. Before placing new EnviroSeal™, ensure urinal trap is clean. Refer to cleaning instructions.

Note: Recycle all used parts.

To Replace the BioPür™ Enzyme Block or BioPür™ Premium Gel Kit



Turn the BioPür™ Kit cover clockwise and Pull Up (#1). Remove residual enzyme. Place a new BioPür™ enzyme in the cage (#2). Place cover on kit and turn clockwise until cover falls into place. Lightly Pull Up on cover to ensure 'locked' into place (#3).



Push Down on edges of BioPür™ Kit cover and Turn counterclockwise to remove the BioPür™ Kit (#1). Recycle the used BioPür™ Kit (#2). After removing protective packaging, screw a new BioPür™ Kit onto EnviroSeal™. Turn clockwise until firmly in place, **DO NOT OVERTIGHTEN** (#3).